

Transitioning to the Total Academic Headcount (TAH) License

Important information about existing licenses

Universities have the option to store eligible licenses prior to switching to the TAH license under MathWorks license suspension policy (found on the last page of your TAH License Schedule). Below are answers to questions frequently asked about the policy.

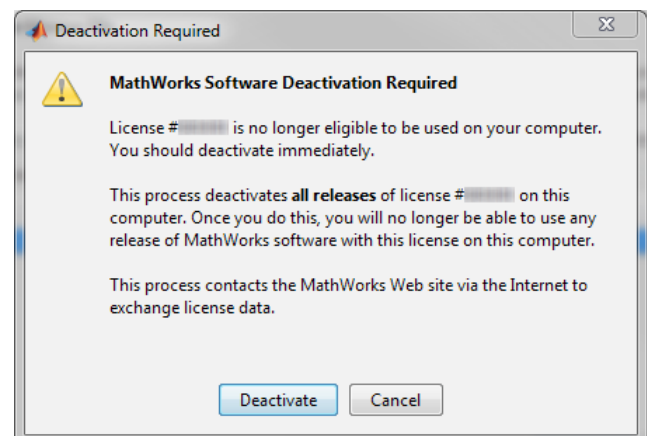
Question	Answer
1. What are the benefits of license suspension?	License suspension provides the option to reactivate your current license assets in the event that the TAH is not renewed in a future year, preserving the university's original investment.
2. What licenses qualify for suspension?	Only academic and classroom licenses with products that are included on the new TAH license. All must be active and current on MathWorks Software Maintenance Service (SMS).
3. What about licenses with products that are not included on the TAH?	All other active academic and classroom licenses will become 'child' licenses of the TAH, and should be maintained as they were prior to TAH.
4. What is the TAH License Administrator's role in the license suspension process?	TAH License Administrators can guide their MATLAB user community through a smooth transition by: <ul style="list-style-type: none">• Working with all license admins, asset managers, and end users on site to compile a license suspension list.• Collecting end user information from existing licenses prior to TAH being processed and communicating what to expect when the transition to TAH occurs. [template]• Communicating instructions on how to activate the TAH license to all license admins and end users. [template]
5. Are we required to suspend all active licenses?	No, it's not a requirement.
6. What if there are licenses that are not current on SMS?	The license owner has the option to pay the amount required to reinstate the license. Otherwise the license is not eligible for suspension.
7. What happens from the license administrator's perspective when his or her license is suspended?	As soon as the TAH order is processed, the license and all end users are removed from the License Center.

Transitioning to the Total Academic Headcount (TAH) License

8. What happens from the MATLAB user's perspective when his or her license is suspended and a new TAH is implemented?

- The license disappears from the License Center and if validation is enabled they will get the “deactivation required” message below the next time they validate, which would be sometime within 30 days.
- If validation is turned off they will not receive a message and they will continue to use MATLAB if the original license was a perpetual license.
- With network licenses they will not receive a message but the license will still disappear from the license center.
- If the deactivate button is pressed MATLAB will be deactivated and they will be unable to open MATLAB until it's reactivated. If they click cancel they will be able to continue using MATLAB.
- Once a license is suspended, SMS is no longer required while the license is in storage.

9. What is the exact message that an end user sees when his or her license is suspended?



If you have additional questions, contact your MathWorks representative or [MathWorks Customer Support](#).